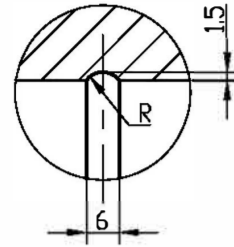
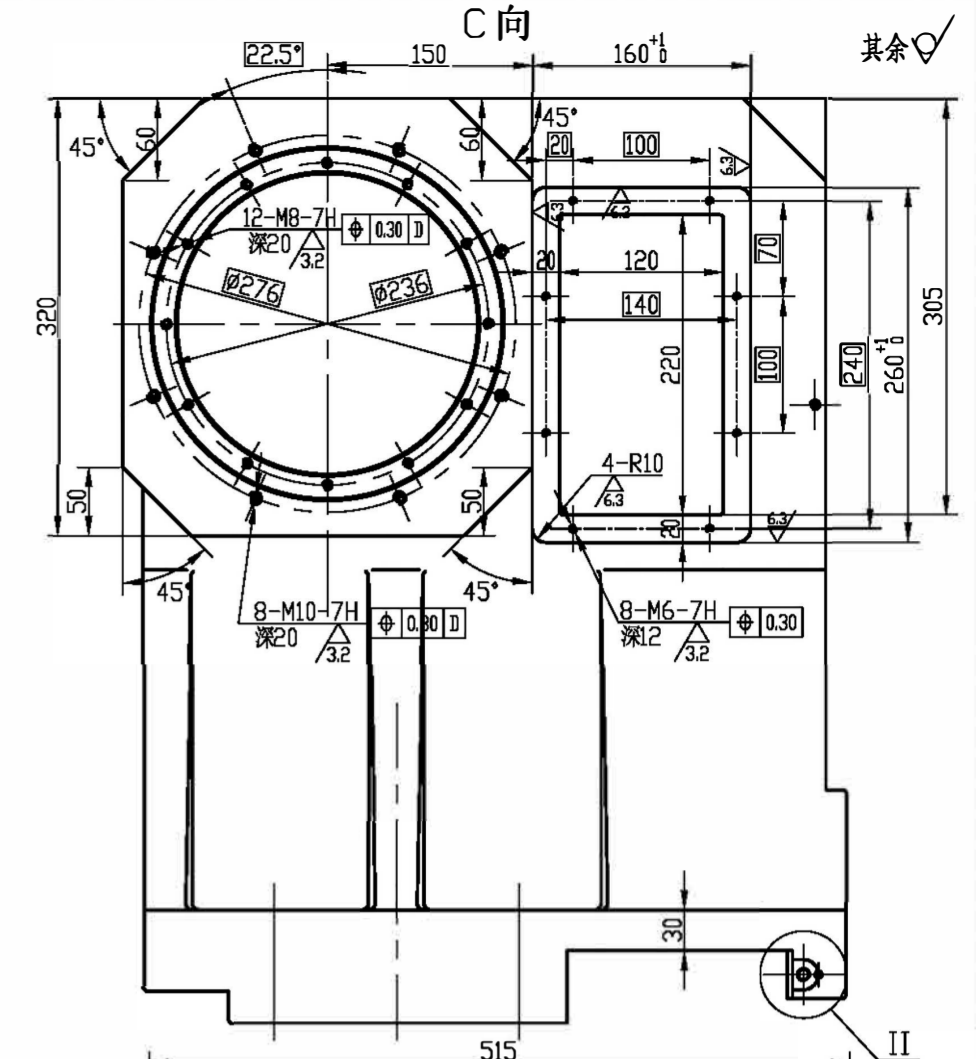
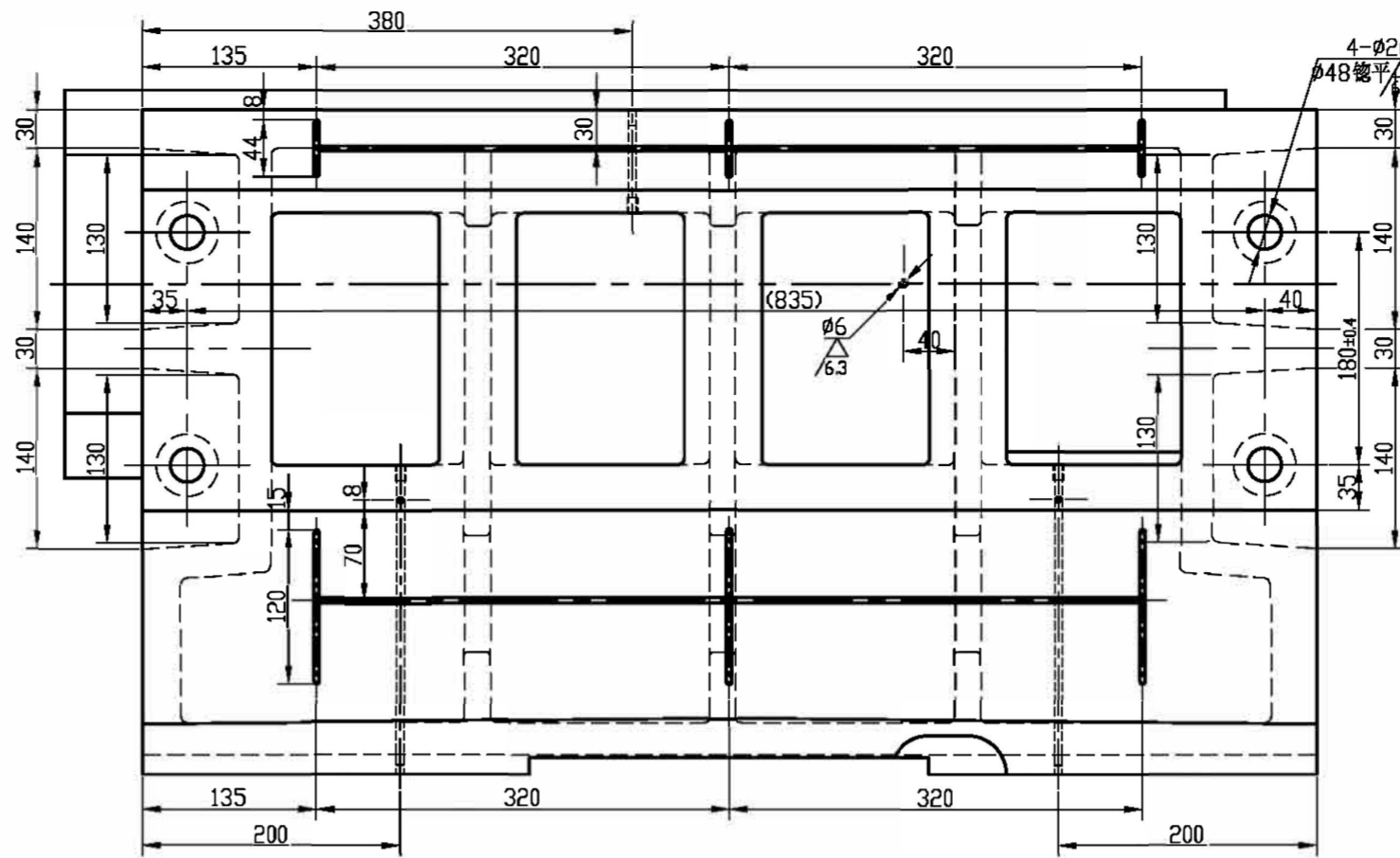
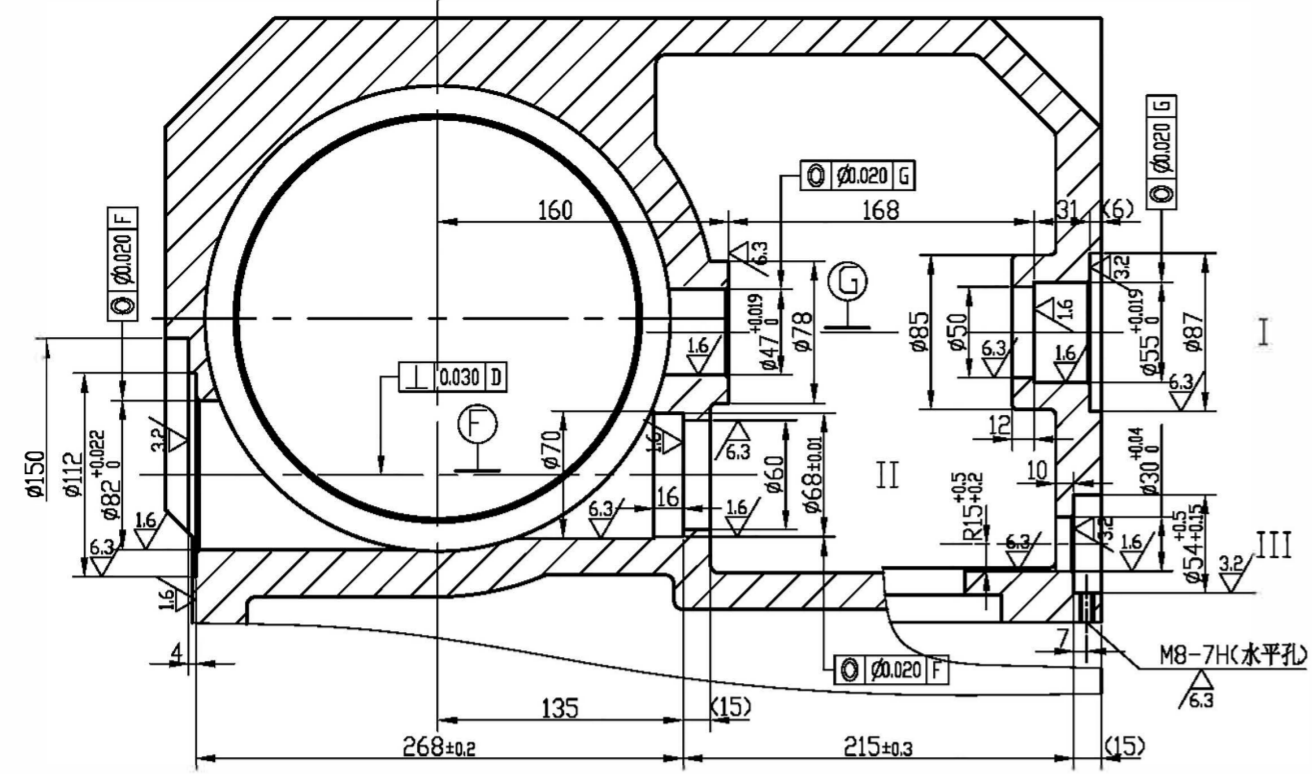
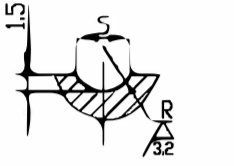


I - II - III展开

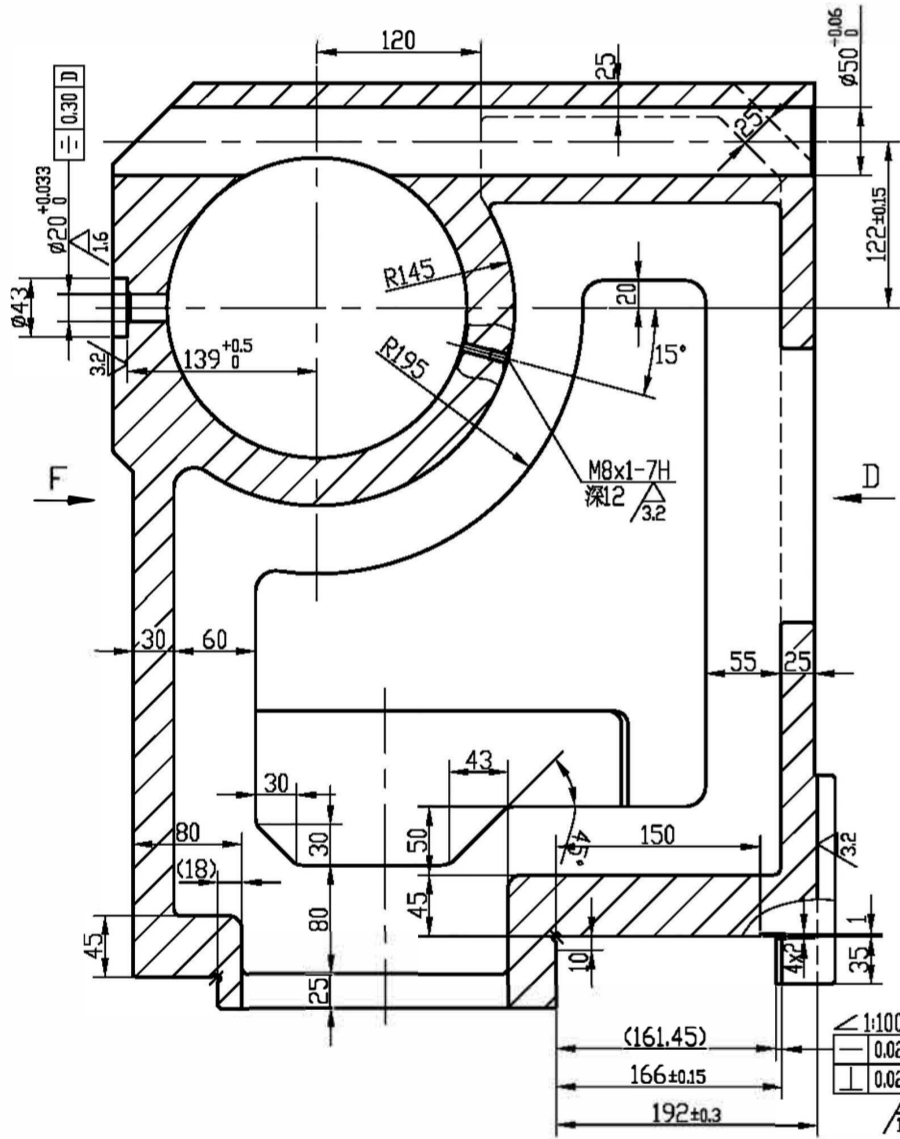
I放大
1:1



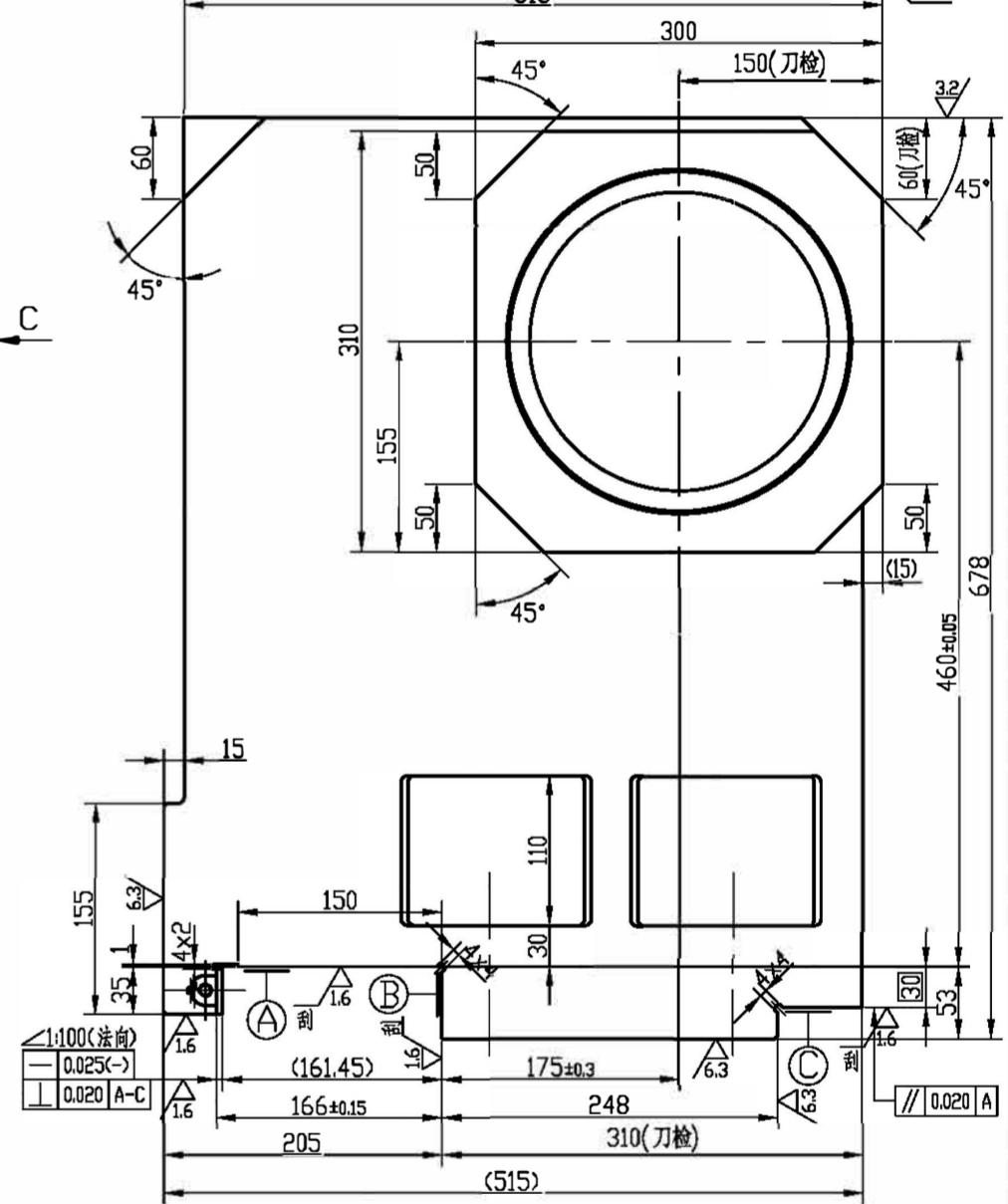
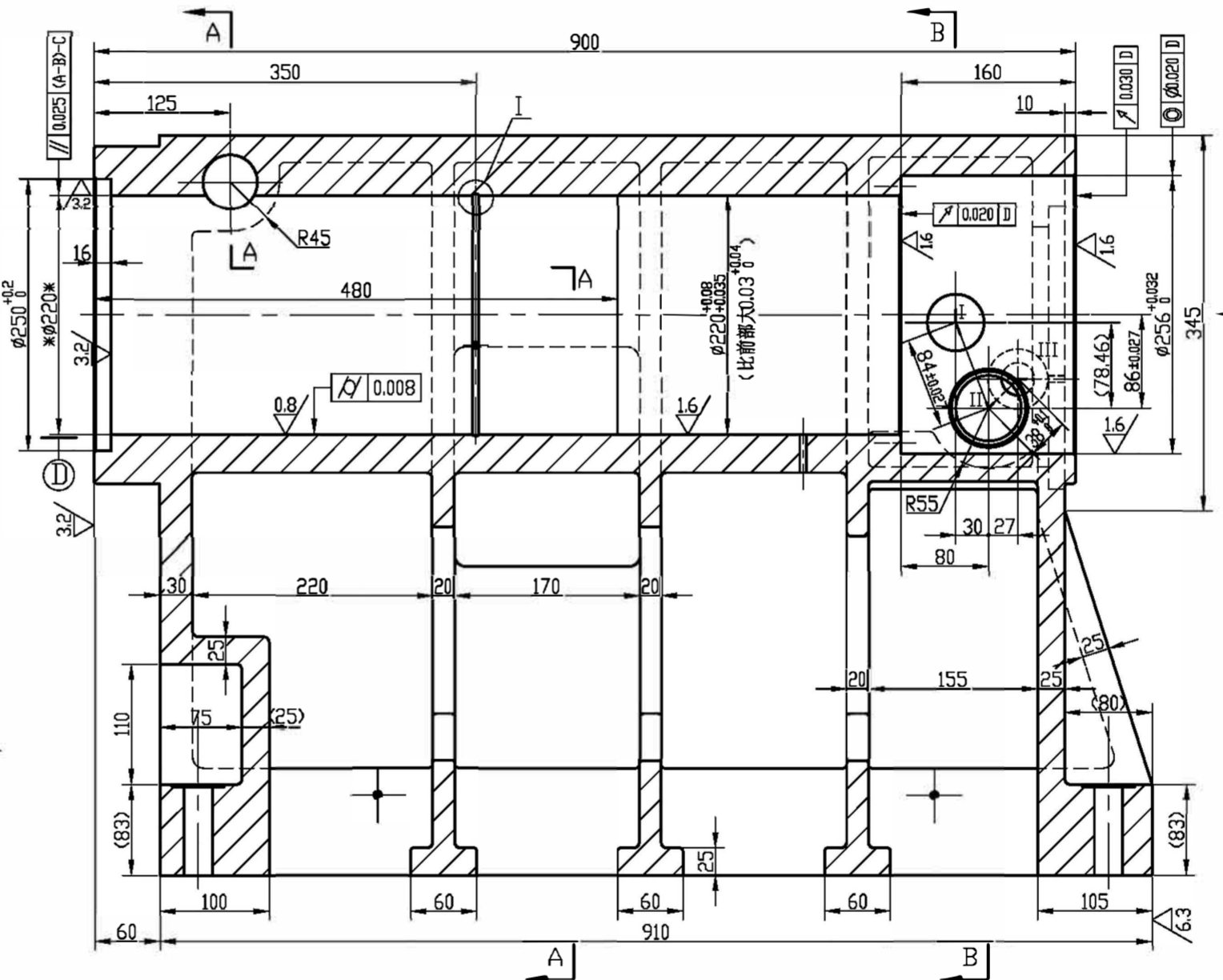
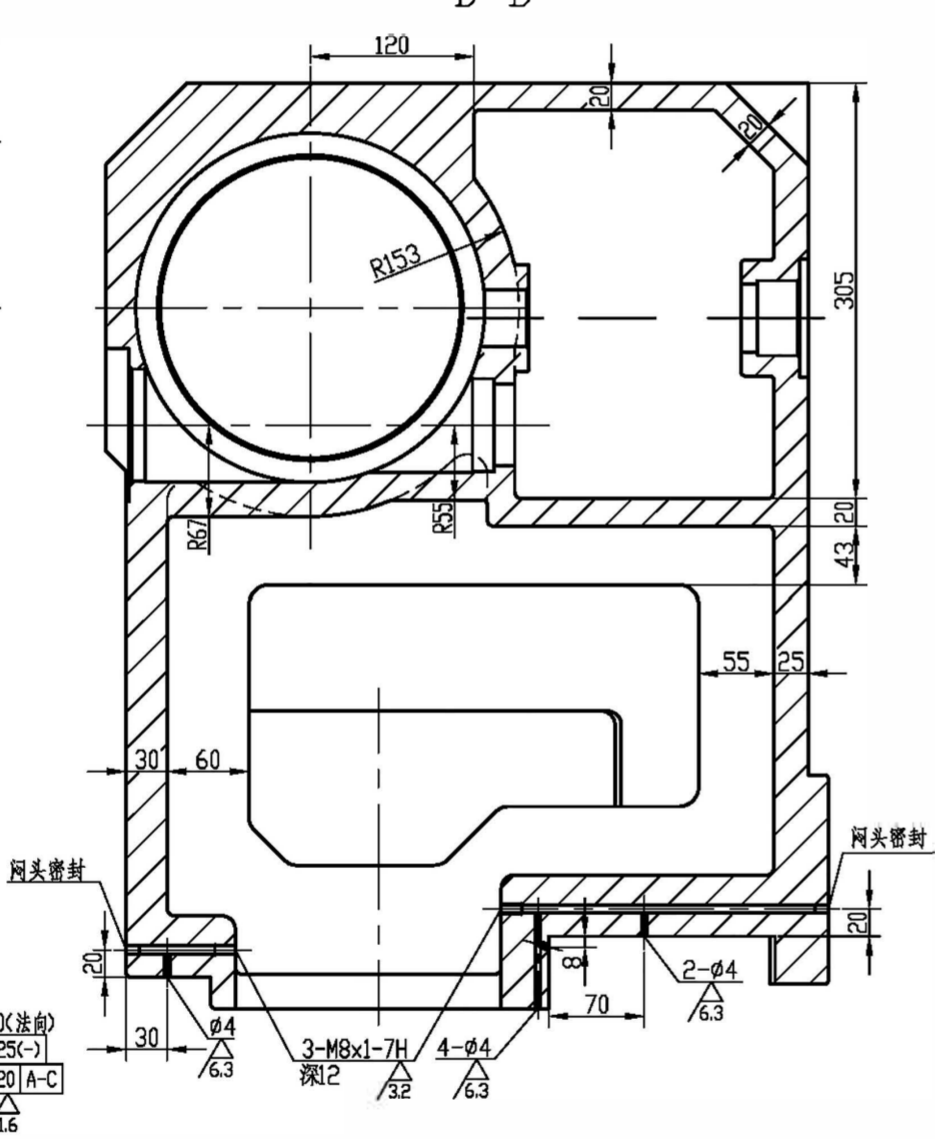
油槽截面放大
4:1



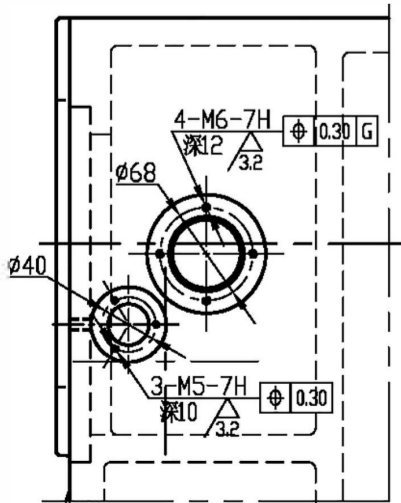
A-A



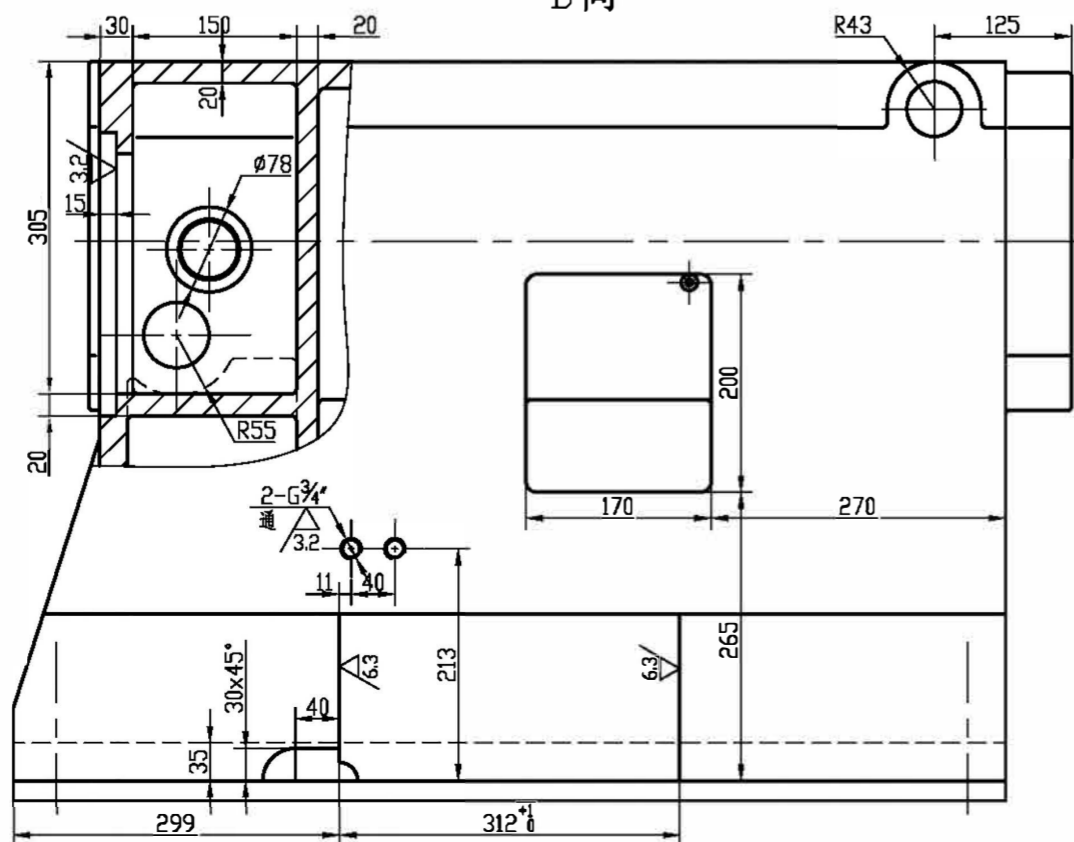
B-B



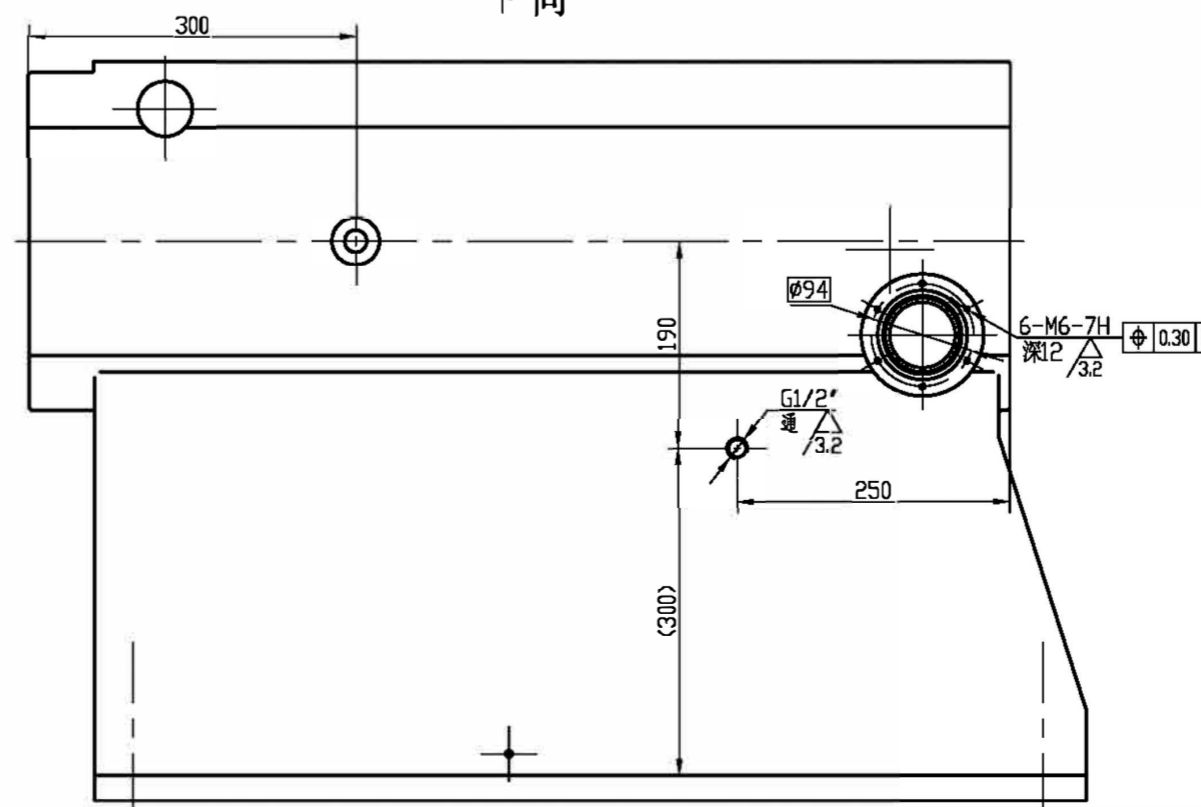
D向局部



D向

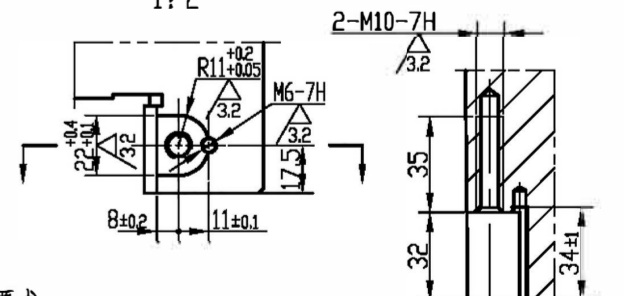


F向



II放大(2端)

1:2



技术要求

1. 人工时效。
2. 加工面棱边及孔口倒角 $1.5 \times 45^\circ$ 。
3. 未注铸造圆角 $R3 \sim R10$ 。
4. 铸件不得有砂眼、气孔、裂纹等缺陷。
5. 与套筒外圆定配, 保证间隙 $0.045 \sim 0.060$ 。

				尾座		CK450-80538	
材料	HT250			比例	1:4		
设计	工艺	审核	日期	图样标记	重量		
绘图	标准化	审定					
检查	日期			共 1 页 第 1 页			